

SITE E(i) < WENTWORTH GATE >



SITE LOCATION MASTERPLAN



Site C



Site A



Site B



Site E(i)

KEY
 — Proposed sites
 - - - Sites omitted after public consultations

KEY
 — Boundary line
 ● Existing tree
 — Proposed hedge
 ■ Concrete pavior - graphite colour 200mm square
 ■ Garden path - porous gravel
 ■ Category A trees
 ■ Category B trees
 ■ Category C trees
 ■ Category R trees



See
TREE SURVEY
 Street & Communal Areas
 Moor Pool
 Harbourn
 Jan 2007

PLANNING APPLICATION SCHEDULE < SITE E(i) >

WHAT WAS PROPOSED AT TIME OF PUBLIC CONSULTATION?

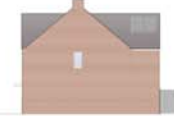
- a) 1 x 2 storey 3 bed house
- b) 1 x 2 storey 4 bed house

CHANGES TO THE PROPOSAL AS A RESULT OF CONSULTATION

The West Pathway element of the proposal has been removed.
 1 x 2 storey 3 bed house with integral garage off Wentworth Gate.
 Roof terrace removed in order to reduce issues of overlooking. Solar paneling incorporated as part of the design.



PROPOSED TYPE A (SITE E(i))
 3 BED FLOOR PLAN



PROPOSED TYPE A (SITE E(i))
 SIDE ELEVATION



SITE E(i) STREET ELEVATION



PROPOSED TYPE B (SITE E(i))
 4 BED FLOOR PLAN



PROPOSED TYPE B (SITE E(i))
 SIDE ELEVATION



SITE E(i) REAR ELEVATION

SITE C < AERIAL PERSPECTIVE >

